



NOMINATION FOR ANNUAL AWARD FOR BEST ENGINEERING PROJECT 2009



ARCHITECTS RENDERING

NORMAN MANLEY INT'L AIRPORT TERMINAL EXPANSION

PALISADOES, KINGSTON

PROJECT TEAM

CLIENT/COORDINATOR: **Airports Authority of Jamaica.**

PROJECT MANAGER: **Jacobs Consultancy**

ARCHITECT: **Llewelyn Davies Yeang/MODE Ltd.**

CIVIL/STRUCTURAL ENGINEER: **Peter Jervis & Associates.**

MECHANICAL/ELECTRICAL ENGINEER: **Ashley & Associates, T.C. Associates Ltd, OMNI Services Ltd.**

QUANTITY SURVEYOR: **Jacobs Consultancy.**

DESCRIPTION:

Upgrade and Expansion of in excess of 12,000M² of the Terminal Building and the provision of the requisite Electro Mechanical services.

COMMUNITY BENEFITS:

With completion of Phase I of the Terminal Expansion Programme, the city of Kingston now enjoys the benefit of a modern, efficient Terminal offering the latest in technological innovations.

SPECIAL ENGINEERING ACHIEVEMENTS:

1) Design, fabrication and installation of 27.0m clear span roof trusses at 9.0m c/c to support the steel sheeted roof of the Departure Concourse.

2) Top down construction method to create the 12m high glazed curtain wall envelope which comprises the Departure Concourse.

3) Creation of a 'remote' Energy Centre providing air conditioning and standby electrical power for the Terminal Building. The Centre is in excess of 0.5km from the Terminal Building.



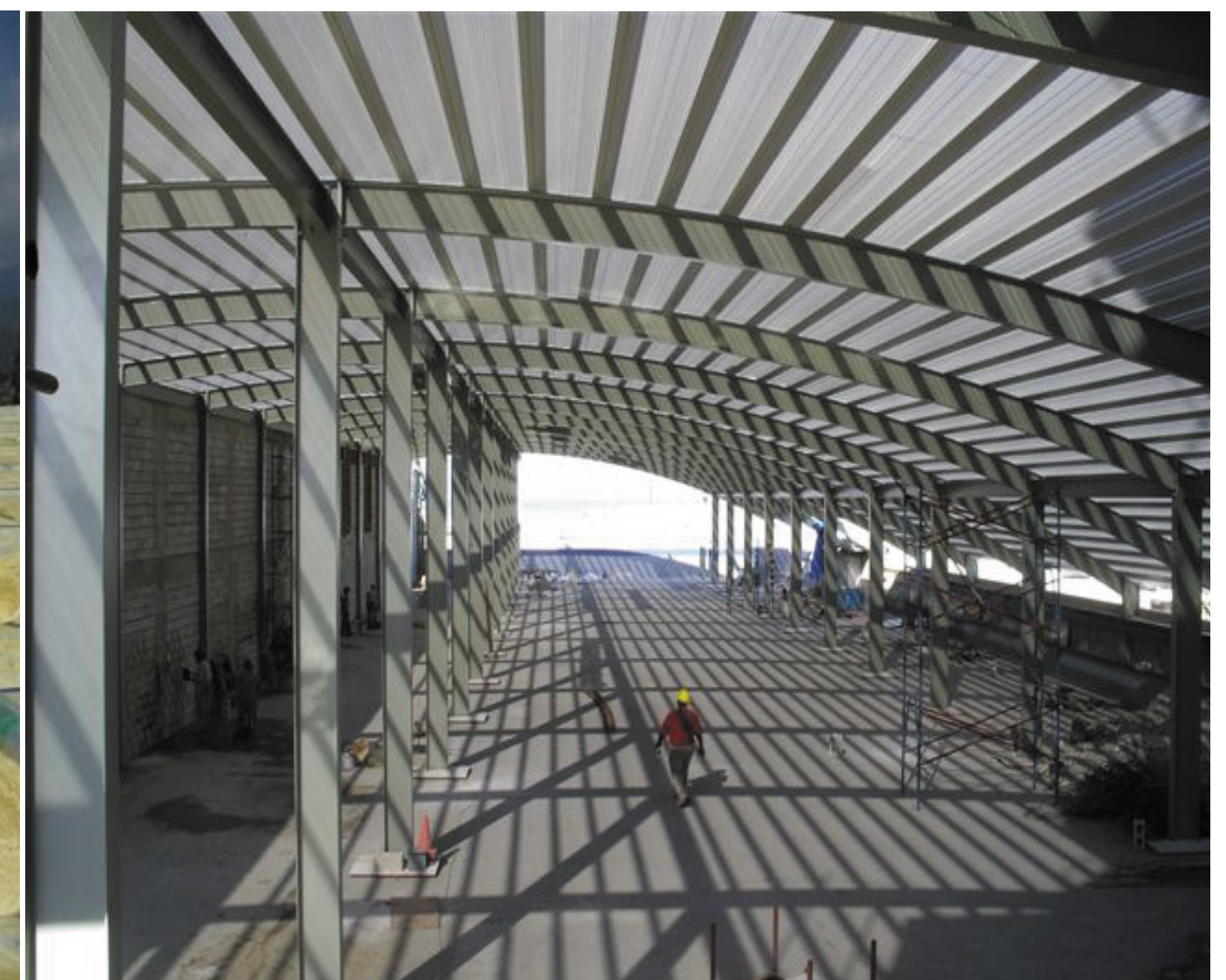
MAIN ROOF SUPPORT TRUSSES



ROOF STEELWORK SUPPORT TO STEEL ROOF SHEETING



INSTALLATION OF ROOF INSULATION



STRUCTURAL STEELWORK, VIEW THROUGH MAIN TICKETING HALL